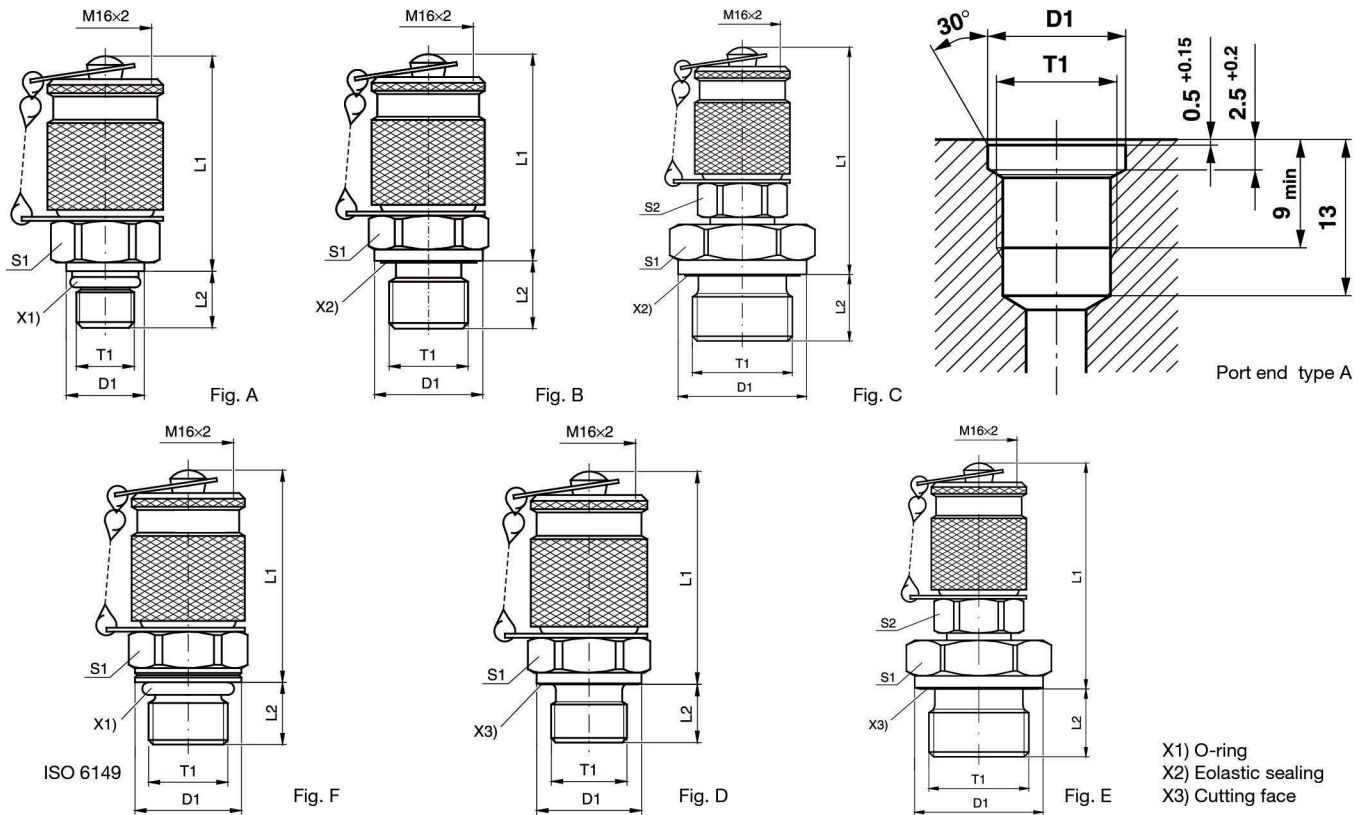


Test Point with threaded connection M 16x2

Male thread: BSP, metric



X1) O-ring
X2) Eolastic sealing
X3) Cutting face

T1	D1	L1	L2	S1	S2	Fig.	Weight g/1 piece	Order code*	PN (bar) ¹⁾		DF**	
									CF	71	CF	71
M 08x1.0	9.5	38.5	7.5	17		A	66	PMA3/8X1OR	250		4.0	
M 10x1.0	11.5	37.0	7.5	17		A	70	PMA3/10X1OR	630	630	4.0	4
M 14x1.5	18.8	39.5	11.0	19		F	79	PMA3/14X1.5ISO	630	630	4.0	4
M 10x1.0	14.0	40.0	8.0	17		D	67	PMA3/10X1	400		4.0	
M 12x1.5	17.0	38.0	12.0	17		D	74	PMA3/12X1.5	400		4.0	
M 14x1.5	19.0	39.0	12.0	19		D	78	PMA3/14X1.5	400		4.0	
M 16x1.5	21.0	40.0	12.0	22		D	90	PMA3/16X1.5	400		4.0	
G 1/8	14.0	37.5	8.0	17		D	70	PMA3/1/8	400		4.0	
G 1/4	18.0	39.0	12.0	19		D	77	PMA3/1/4	400		4.0	
G 3/8	22.0	40.5	12.0	22		D	91	PMA3/3/8	400		4.0	
G 1/2	26.0	46.0	14.0	27	17	E	137	PMA3/1/2	400		3.4	
G 1/8	14.0	37.5	8.0	17		B	72	PMA3/1/8ED	400	400	4.0	4
G 1/4	19.0	39.0	12.0	19		B	76	PMA3/1/4ED***	630	630	4.0	4
G 3/8	22.0	40.5	12.0	22		B	93	PMA3/3/8ED	630	630	4.0	4
M 10x1.0	14.0	40.0	8.0	17		B	71	PMA3/10X1ED	400	400	4.0	4
M 12x1.5	17.0	38.0	12.0	17		B	72	PMA3/12X1.5ED	630	630	4.0	4
M 14x1.5	19.0	39.0	12.0	19		B	77	PMA3/14X1.5ED	400	400	4.0	4
G 1/2	27.0	46.0	14.0	27	17	C	135	PMA3/1/2ED	400	400	4.0	4

**DF = Design Factor

***in 316L

¹⁾ Pressure shown = item deliverable

$\frac{PN(\text{bar})}{10} = PN(\text{MPa})$

*Please add the **suffixes** below according to the material/surface required.

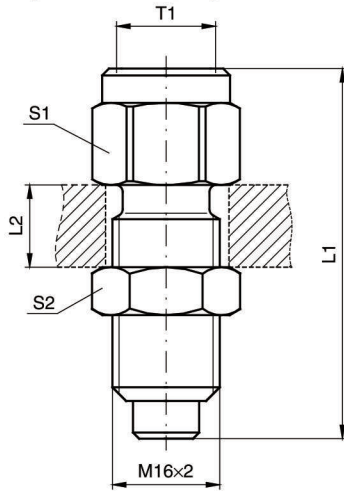
Order code suffixes			
Material	Suffix surface and material	Pxample	Standard sealing material (no additional suffix needed)
Steel, zinc plated, Cr(VI)-free	CF	PMA3/10X10ORCF	NBR
Stainless Steel	71	PMA3/10X10OR71	VIT
Stainless Steel	316L	PMA3/1/4ED316L	NBR

Test point pressure gauge connector with threaded connection M16x2

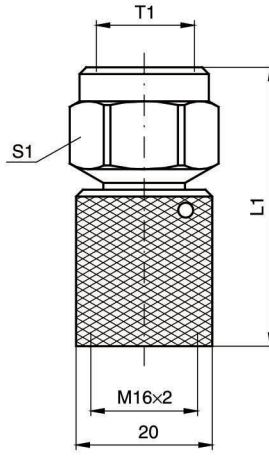
Test point with threaded connection M16x2

Test point high pressure hose with threaded connection M16x2

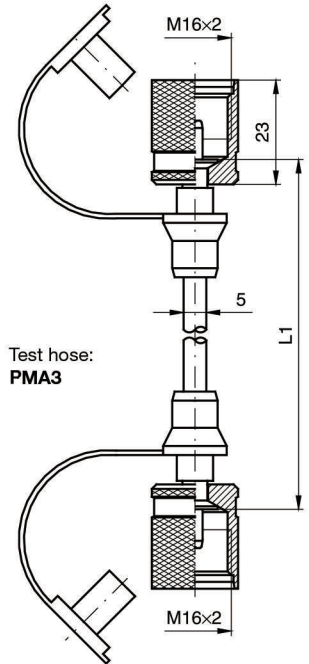
Female thread: BSP
Sealing: sealing ring DIN 16258*



Pressure gauge connector:
PAV... PA3



Gauge-Direct-Connector:
PAVMD... PA3



Test hose:
PMA3

T1	L1	L2 max.	S1	S2	Weight g/1 piece	Order code*	PN (bar) ¹⁾ CF	DF**
G 1/4	54.0	12	19	19	74	PAV1/4 PA3	630	4.0
G 1/2	64.0	12	27	19	129	PAV1/2 PA3	630	4.0
G 1/4	41.0		19		61	PAVMD1/4 PA3	630	4.0
G 1/2	51.5		27		103	PAVMD1/2 PA3	630	4.0
	200.0				73	PMA3-200	630	2.5
	300.0				74	PMA3-300	630	2.5
	400.0				74	PMA3-400	630	2.5
	630.0				79	PMA3-630	630	2.5
	800.0				83	PMA3-800	630	2.5
	1000.0				87	PMA3-1000	630	2.5
	1500.0				95	PMA3-1500	630	2.5
	2000.0				105	PMA3-2000	630	2.5
	2500.0				110	PMA3-2500	630	2.5
	3200.0				125	PMA3-3200	630	2.5
	4000.0				137	PMA3-4000	630	2.5

**DF = Design Factor

¹⁾ Pressure shown = item deliverable

$$\frac{\text{PN (bar)}}{10} = \text{PN (MPa)}$$

*Please add the **suffixes**
below according to the material/
surface required.

Order code suffixes			
Material	Suffix surface and material	Example	Standard sealing material (no additional suffix needed)
Steel, zinc plated, Cr(VI)-free	CF	PAV1/4 PA3CF	NBR

* Sealing rings according to DIN 16258 for steel design of copper,
for stainless steel design of stainless steel.

Note hoses with small diameter:

- Min. bending radius $r = 20$ mm
- Working temperature -20 °C up to 100 °C (short time to $+120$ °C)
- Hoses are to be protected from fire, from sharp-corners and hot objects.

For measuring with liquid pressure media please note:

Bleed before connecting tube! By capillary action discharge of the pressure medium is prevented widely.

Temperature factor of pressure rating:

up to	0 °C	122 %
for	30 °C	110 %
for	50 °C	100 %
for	80 °C	86 %
for	100 °C	77 %